



ST. PHILIP
PRESBYTERIAN CHURCH

MISSION PARTNERS



“Serve the Lord with Gladness”
Psalm 100

Matthew
25:35-40

“For I was hungry and you gave me food, I was thirsty and you gave me something to drink, I was a stranger and you welcomed me, I was naked and you gave me clothing, I was sick and you took care of me...truly I tell you, just as you did it to one of the least of these who are members of my family, you did it to me.”

NRSV



www.amazingplacehouston.org

Mission Statement

The mission of Amazing Place is to provide fellowship, memory care and wellness for adults with mild to moderate memory loss and support to their families and the community.

Volunteers are an important part of the day-to-day operations at Amazing Place. Amazing Place is looking for:

- Bible Study Leaders to facilitate a small group Bible study weekly.
- Kitchen volunteers to support the Memory Preservation Nutrition program which involves more fresh food preparation. This requires a once a week commitment from approximately 10 am-1 pm.
- Front desk volunteers to assist participants and caregivers as they arrive and depart; answering and directing calls. This requires a once a week commitment.

Families pay only half the actual cost per day because Amazing Place strives to keep its daily rates reasonable for the families who are in an already trying time. Approximately 19% of the families receive some form of scholarship.

Participants using
Smart Board



AUSTIN COLLEGE

www.austincollege.edu

Mission Statement

Austin College is a private, residential, co-educational college dedicated to educating undergraduate students in the liberal arts and sciences while also offering select pre-professional programs and a graduate teacher education program...An Austin College education emphasizes academic excellence, intellectual and personal integrity and participation in community life.

Founded in 1849 by a Princeton-educated Presbyterian missionary, Austin College enjoys a place in early Texas history and remains a recognized leader in higher education for innovative programs, a strong faculty and dedicated students.

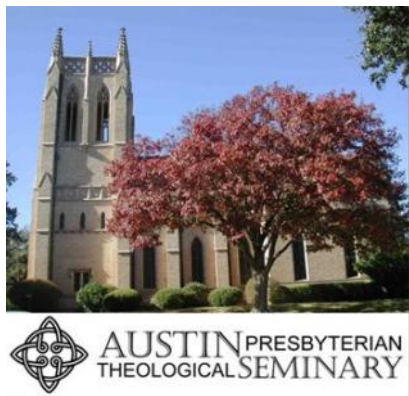
The college opened in Huntsville in 1850 and moved to Sherman in 1876. The College celebrated its sesquicentennial in 1999, highlighting 150 years of quality education with a history of learning, leadership and lasting values.

Since its founding by Brazos Presbytery (now Presbytery of New Covenant), Austin College has been associated with the Presbyterian Church. This covenant relationship provides a distinctive flavor to the life of the College.

St. Philip's Associate Pastor is an Austin College Kangaroo as well as many St. Philip members.

Hold'em Hoppers!





www.austinseminary.edu

Mission Statement

For the glory of God and to proclaim the gospel of Jesus Christ, Austin Presbyterian Theological Seminary is a seminary in the Presbyterian Reformed tradition whose mission is to educate and equip individuals for the ordained Christian ministry and other forms of Christian service and leadership; to employ its resources in the service of the church; to promote and engage in critical theological thought and research; and to be a winsome and exemplary community of God's people.

St. Philip has supported Austin Seminary for over 50 years, understanding that the future of our denomination is directly correlated with APTS. John Wurster, our current senior pastor, and many of our former pastors and associate pastors attended APTS. Numerous St. Philip interns, inquirers and candidates for ministry have been transformed to ministers at this wonderful seminary.

Several St. Philip members have served on the board throughout the years.

Southeast Asia



Dr. Cynthia Morgan and Dr. Leslie Morgan Advisors for Health Ministries



Since 1989 Les and Cindy Morgan have been serving as PC (USA)'s only mission co-workers in one of the world's most economically impoverished and most densely populated countries, Southeast Asia. They have served in hospitals, they run village clinics, and they have worked on controlling tuberculosis and leprosy.

They feel called to practice the ministry of compassion among the sick and to nurture this as a ministry of the body of Christ.

St. Philip supports their ministry in its annual Mission Budget. Individuals are encouraged to pray for Leslie and Cindy Morgan and their work.



more info | visit the St. Philip website, www.saintphilip.net.



www.beaconhomeless.org

The Beacon is a comprehensive ministry providing services that restore dignity, self-respect and hope to Houston's underserved and homeless. Since opening our doors in 2007, we've grown from serving 80 clients per day to serving 600-800 clients daily. The Beacon's success is driven through four core programs: The Beacon Day Center, Cathedral Clinic at The Beacon, Brigid's Hope at The Beacon, and Beacon Law. These four programs come together under one roof to provide meals, showers, laundry service, case management, medical and psychiatric care, pro bono legal services and pastoral care.

The Beacon and its programs are part of Cathedral Health and Outreach Ministries, CHOM, a registered 501©(3) nonprofit charitable organization.

Much of the Beacon's success is achieved through an active volunteer base of over 7,550 individuals who provide approximately 85% of all services.

Volunteer opportunities include:

baking bread, preparing and serving meals, greeting and assisting with client intake, laundering and folding client's clothing and providing case management, mentoring, database support and legal services.

Contact Jonathan Holland, Community Outreach Manager, 713-220-9769



www.beringomega.org

Mission Statement

Bering Omega Community Services exists to nurture the well-being and meet the physical, emotional and spiritual needs of persons affected by HIV/AIDS through compassionate health care and social services.



Omega House is a residential hospice.
602 Branard St.

Bering Omega's Day Treatment program, a licensed adult care center, is the only one of its kind, offering services specifically for individuals with HIV/AIDS in Houston. The services include nursing care, physical therapy referral, nutritional counseling, and a food program that provides meals, snacks and food bags at the end of each week.

The Dental Clinic offers a full range of oral and dental healthcare services to those living with HIV/AIDS.

Volunteers serve in virtually every capacity of its operations. Annually more than 600 people contribute over 23,000 volunteer hours.

St. Philip has had a long relationship with this partner since its beginning. In the past a St. Philip member put in many volunteer hours at Bering/Omega and led an Aids Care Team from St. Philip.

Even today AIDS infections continue to grow despite knowing the risks. .

BETHESDA CLINIC IN XOCENPICH, MEXICO



St. Philip has enjoyed a fraternal partnership in mission with Dr. Jose Estrella and the Bethesda Clinic since 2001. Pictured are Dr. Jose Estrella and his son, Dr. Federico Estrella.

When a member of St. Philip was a student in Mexico, she met Presbyterian missionaries, the Rossers, through whom she met Jose Estrella. Jose was a boy from a very poor Maya family, whose bright mind was recognized by Presbyterian missionaries, who supported him through tuition from middle school, university & medical school in the capital. As soon as he received his M.D., he returned to his village of Xocenpich, where he has practiced medicine 24/7, living in a house behind the Clinic ever since. Now in his mid-80's and in a wheelchair with only one leg, he still sees some patients. Anytime, day or night, people from different communities come to the clinic and are provided medical help and medicine.

The Bethesda Clinic is included in St. Philip's annual mission budget. St. Philip members have gone on several mission trips to Xocenpich.

St. Philip contributes to a scholarship fund for students to go to the school for nurses aides located at the Clinic.





www.cancare.org

Mission Statement

Our mission is to improve the quality of life for cancer patients and their families.

Ever since CanCare was created in 1990, St Philip has been an active participant in its mission of hope for cancer survivors and their caregivers. From the first volunteer training class to the most recent class, St. Philip members have logged many hours listening to those going through their shared experience with cancer or the care of a loved one. St. Philip members have participated in the annual marathon run, representing Can Care, as well as been leaders on CanCare's Board of Representatives from its earliest years. Can Care and its volunteers see survivors as people first, then as patients.

BECOME A VOLUNTEER

To become a CanCare volunteer, you must be a cancer survivor who has been finished with treatments for at least six months, or the caregiver of a cancer survivor. Cancer patients are matched with a volunteer who has survived the same or similar type cancer to receive one-on-one positive encouragement and hope from someone who understands first hand what they are going through. Opportunities are also available for volunteers to make hospital visits to cancer patients and their families in one of the member hospitals in the Houston area. Help is needed with CanCare charity events ranging from office work to onsite facilitation.

CanCare would also appreciate referrals from congregants who know of someone who would benefit from its free and confidential services.



CHRISTIAN COMMUNITY SERVICE CENTER

www.ccschouston.org

Mission Statement

The mission of the Christian Community Service Center (CCSC) is to serve the poor, hungry, disabled, and otherwise needy while respecting their religious, ethnic or cultural differences. CCSC was created out of faith and founded in the belief that we are called to help all God's children heart to heart and hand to hand.

CCSC is a coalition of 41 Houston churches that began in 1980. Central Presbyterian Church was a founding member in 1980. For many years the community garden was at Central.

VOLUNTEERS are needed for:

- **Emergency Services, food pantry, and/or client intake.** Bilingual volunteers (Spanish) are especially needed.
- **CCSC Garden** to assist with planting, maintaining, and harvesting produce from the garden.
- **JobNet:** Assist unemployed or underemployed individuals in job searches, computer training and other job search skills; serve as a computer tutor or as an office assistant.
- **Martha's Way:** assist with student registration, role playing and help manage class logistics.
- **Youth Services:** Back-to-School, Jingle Bell Express and Louise J. Moran Vision Care Program: assist with registration and distribution events.
- **The Sunshine Resale Shop:** help sort, price and display merchandise; assist clients with purchases.

Mission Statement

Good Neighbor Healthcare Center promotes the well-being of our community by providing a full range of affordable quality primary and preventative health care in an environment that fosters dignity and respect.

For over 40 years the St. Philip community has supported Good Neighbor Healthcare Center. Since that time the clinic has grown but their mission has remained the same. Good Neighbor serves low income and the medically underserved communities and their fees are based on the patient's ability to pay. They are staffed by highly competent healthcare professional teams who provide quality healthcare and dental care to all people regardless of insurance status or income level. Forty percent of their funds come from the government or patient fees. In order to continue to provide quality healthcare, Good Neighbor depends on the generosity of the Houston community. A St. Philip member serves on its board.

Volunteers are welcome to help with their Annual Christmas Party for the clinic's pediatric patients. Over 1,000 kids come to the party each year. Clerical support is also needed. **Volunteers** have helped one of the nurse educators organize patient educational materials for expectant mothers.

St. Philip's Presbyterian Women collect toys which are given to children during the Good Neighbor Healthcare Center's Christmas Party.





GOOD SHEPHERD HOSPITAL

Democratic Republic of Congo

www.IMCK.org

IMCK is a Christian primary health care facility and medical education center. Its services are centered at the Good Shepherd Hospital, which is a 140 bed facility about 10 miles outside of Kananga, in the Kasai Province of the DR Congo, and at PAX, a clinic located in the city of Kananga, that has 20 beds. General medicine, surgery, ophthalmology, pediatrics, gyn/obstetrics, dental services, radiology and lab services are provided. This faith-based organization has been in operation for almost 60 years. It is the largest Presbyterian affiliated hospital in the Democratic Republic of Congo.



Front of Hospital



A member of St. Philip is in contact with this Hospital and its needs. He worked in Kananga in the PC(USA) affiliated pharmacy depot which helped supply medicines and medical supplies to the hospital. He goes back and visits the hospital every couple of years.

HOUSTON INTERNATIONAL SEAFARER'S MINISTRIES

www.houstonseafarers.com



**Local
Mission**

**Global
Outreach**

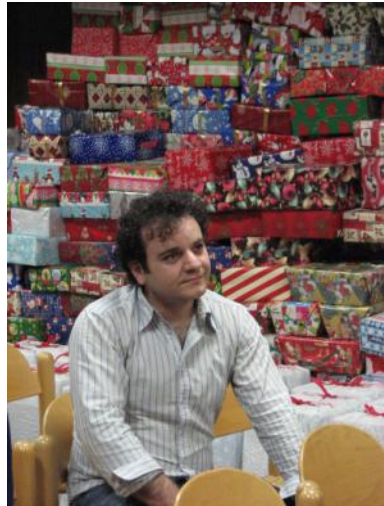
Mission Statement

Recognizing that all humans are a gift of God, the mission of the chaplains and Committee for Ministry to the Port of Houston is to carry out a ministry of presence, outreach, witness, worship, service, and advocacy to, with, and for seafarers and their families from around the world.

Members of St. Philip support the Seafarer's Ministry via periodic group visits to the Seafarer's Center, participation in the annual Christmas party at the Seafarer's Center on the ship channel, and preparation of Christmas gift boxes for seafarers.

This ministry is included in the annual Mission budget. One St. Philip member serves on the Presbyterian International Seafarer's board.

St. Philip **volunteers** pack and wrap gift boxes for the seafarers each year.





www.imaworldhealth.org

A HISTORY OF PARTNERSHIP

IMA World Health and the Presbyterian Church have a long history of partnership to advance health to vulnerable and marginalized people all over the world.

In 1960, the United Presbyterian Church, now PC(USA), teamed up with five other Protestant mission boards to form “Interchurch Medical Assistance,” now IMA World Health. IMA’s role was to manage the procurement and distribution of medicines and medical supplies for mission hospitals, uniting this effort under one roof. PC(USA) currently supports IMA’s work to fight onchocerciasis (also known as River Blindness) in the Democratic Republic of Congo.

A \$25 donation provides an entire **Safe Motherhood Kit™** to an expectant mother, from the materials and packaging to shipping, delivery and training.

IMA is especially proud that it is able to pass along 98% of its funding to its programs, with only 2% supporting overhead and administrative costs.

A member of St. Philip served as Vice President of Pharmaceutical Services for IMA World Health for over 15 years.

One of St. Philip’s communion offerings goes to IMA World Health.

Mission Statement

The Mission of Interface-Samaritan Counseling Centers, Inc. is to encourage human development by providing counseling and educational services from a Christian perspective.

TOGETHER FOR 40+ YEARS...



In 1971 St. Philip's session conceived the idea of sponsoring a shopping center ministry in the Galleria area. Presbyteries of Gulf Coast and Brazos (now Presbytery of New Covenant) provided the capital funds. The covenant relation formed in 1977 continues to exist. In 1987 Interface affiliated with The Samaritan Institute, a national organization.

ISCC provides clinical services in 6 locations around Houston, all located on church campuses. ISCC makes a concerted effort to reach out and serve communities who otherwise would not have access to mental health services. The Dunn Hope Fund provides scholarships for those who cannot afford counseling, such as students at Yellowstone Academy, which serves students from the poorest of families. Weekly counseling services are available at this Academy. Scholarships are also available to veterans suffering with PTSD.

Members of St. Philip serve and have served on its board throughout the years and it is supported in the annual mission budget.



www.imgh.org

Mission Statement

Interfaith Ministries for Greater Houston brings people of diverse faith traditions together for dialogue, collaboration and service, as a demonstration of our shared beliefs.

VOLUNTEER OPPORTUNITIES

We rely on the valuable contributions of more than 3,000 **volunteers** annually to provide quality services to seniors and refugees. IM is located at 3303 Main Street, Houston, TX 77002.

We have many **volunteer** opportunities for **individuals, families and groups** to help serve people in need; in addition, many of our projects are appropriate for **families with children**.

Meals on Wheels, aniMeals on Wheels, Refugee Services, Interfaith Relations, and Disaster Preparedness all have **volunteer** opportunities.

Many members of St. Philip have served on the Interfaith Ministries Board over the years and some have chaired this board. St. Philip's Sr. Pastor, Rev. John Wurster, presently serves on this Board

A Presbyterian minister who attends St. Philip is Director of Interfaith Relations.

Kids Against Hunger®

Feeding families around the world...and around the corner.

www.kidsagainsthunger.org

Mission Statement

The mission of Kids Against Hunger, a humanitarian food-aid organization, is to significantly reduce the number of hungry children in the USA and to feed starving children throughout the world.

The St. Philip Presbyterian Church Kids Against Hunger satellite assembles a rice and soy casserole meal fortified with 21 essential vitamins and minerals and 6 dehydrated vegetables. This soy (52% protein) and nutrient—rich formula provides complete nutrition and can reverse the starvation process.

Acting as a part of the Mission Committee, an average of 10,000 meals a month are delivered by our volunteers to benevolence partners such as CCSC and Kid's Meals. Food packages have been sent to orphanages and impoverished communities in Matamoros, Mexico. The goal is to package 1,000,000 meals since KAH began in 2010.

Child in Mexico holding the
KAH food packet.



St. Philip Volunteers

St. Philip has welcomed hundreds of **volunteers** from school, church, civic and business groups to serve with our members assembling and boxing meals. St. Philip **volunteers** are always needed.



www.kidsmealshouston.org

Mission Statement

The mission of Kids' Meals, Inc. is to end hunger among children by delivering nutritious meals to the doors of children in need, free of cost, every weekday year round. As Texas' only meals-on-wheels service for children, we provide healthy home-delivered lunches to hungry children under the age of five who live in poverty.

Monthly, the St. Philip Kids Against Hunger satellite packages and delivers thousands of nutritionally complete soy and rice casserole meals to Kid's Meals. These packages are used to provide families with week-end food when daily lunches are not delivered. Our KAH meals are also used to supplement baskets that Kid's Meals delivers for Thanksgiving, Easter and Christmas.



Gifts for Christmas families' project

St. Philip **volunteers** collect and deliver presents for families selected by Kid's Meals staff. Cash donations were used to give each family a gift card too. The families are prescreened by and have received help from Kids Meals for 6 months or more.



www.livingwatersfortheworld.org

Mission Statement

Living Waters for the World is a Christian ministry that provides sustainable clean water, fostering long-term, mutually beneficial relationships between volunteers and communities in need.

Volunteers from St. Philip joined ChristChurch Presbyterian and St. John's Presbyterian Churches to install a purifying water system in the Yucatan. They are still involved in restoring and installing other water systems.

LWW trains mission team leaders, installs water filtration systems and teaches the local partners about health and hygiene. LWW equips their partners with materials and supplies at cost.

LWW sustains the operation of LWW clean water systems by building and supporting relationships with and between our partners through multi-year covenants and in-country network services.





Lord of the Streets Episcopal Church

www.lordofthestreets.org

Mission Statement

The work and mission of Lord of the Streets Episcopal Church is to minister to the spiritual, emotional, physical and social needs of individuals living in Houston who are homeless, in crisis or in transition.



Since 1990 Lord of the Streets Episcopal Church has been dedicated to ministry to Houston's homeless population in downtown and mid-town Houston.

Sunday services for the homeless are held at Trinity Episcopal Church, 1015 Holman St. @ Main Street, Houston, TX , followed by breakfast.

St. Philip **volunteers** serve breakfast several times a year to the Lord of the Street's homeless after their Sunday worship service. The **volunteers** meet at St. Philip at 6:30 am and car pool to Trinity Episcopal Church. They return to St. Philip by 9:00 am.



**St. Philip Volunteers
ready to serve breakfast**



MBF

Medical Benevolence Foundation

www.mbfoundation.org

Mission Statement

Since 1963, the Medical Benevolence Foundation (MBF) has worked to provide hope and healing to those most in need. Working with our international church partners, MBF supports healing ministries in more than 100 hospitals and clinics through the world.

MBF has been the officially validated medical mission support organization for the Presbyterian Church (USA) for over 45 years. MBF's work includes funding, medical supplies, community development and awareness. Under awareness, MBF informs donors of the great needs around the world and how, together, we can be a part of this exciting work.

MBF supports **Les and Cindy Morgan**, both medical doctors in **Bangladesh**, who are also St. Philip Mission Partners.

Ongoing support, or even a one-time gift, provides the resources for mission workers to continue day-to-day with the international health and development work for which they have been called by God and commissioned by the Presbyterian Church (USA). While some enjoy a broad base of support from individuals and churches, others need additional support to complete their funding requirements. MBF is included in the annual St. Philip Mission Budget. E. Andrew Mayo, CEO, stated, **“Always, the goal is to help our partners develop sustainable, quality health programs that declare God’s love and compassion for all people, regardless of ability to pay.**

MONTREAT

www.montreat.org



Mission Statement: *Encountering God through relationships, renewal, recreation, and rest.*

The Montreat Conference Center is one of three national conference centers affiliated with the Presbyterian Church (USA). The conference center is under the management of the Mountain Retreat Association, which formed in 1905 and is a church related institute. For over 100 years, Montreat has been a place set apart for those who journey here seeking a closer relationship with their Creator.

Each year Montreat hosts:

- Over 5,000 youth that attend one of its six Youth Conferences
- Over 40 conferences and programs attended by pastors and committed lay people from around the country
- 11 summer Sunday worship services in historic Anderson Auditorium
- Over ten weeks of Road Scholar Programs
- Hundreds of guest groups who come to private retreats held at our Center
- Thousands of people from the surrounding community to enjoy the natural beauty of our hiking trails and other recreational opportunities.



MO-RANCH



www.moranch.com

Mission Statement

The mission of the Assembly is to foster growth in God through Jesus Christ by sharing its unique living, learning Christian environment.

Since 1949, Presbyterian Mo-Ranch Assembly has been a camp and conference center affiliated with the Synod of the Sun of the PC(USA). We occupy approximately 500 acres in a beautiful setting on the North Fork of the Guadalupe River in the Scenic Texas Hill Country.

Since 1976, many from St. Philip attend a Mo-Ranch retreat during the second weekend in June. The annual Mo-Ranch Shower began 15 years ago. It is St. Philip's way of showing our appreciation for the mission and the work they do there.

St. Philip members have **volunteered** and served on and led various committees for many years. St. Philip members and pastors have also been active in planning and leading conferences at Mo-Ranch.





Mission Statement

Presbyterian Children's Homes & Services provides a variety of Christ-centered services to children in need and their families.



Hurting children need authentic, loving relationships with caring adults.

Presbyterian Children's Homes & Services was founded in 1903. Since then it has consistently served abused, abandoned and neglected children in a number of ways:

- Residential care in group homes supervised by resident parents
- Child and family services, including counseling for troubled family relationships
- Foster care
- Adoption
- Single parent family programs which include transitional housing, counseling and job training.

These services are provided through trained staff and **volunteers** whose standards meet the high expectations of PCHAS. Through these programs, the agency is able to provide services to more than 4,500 children each year.

PCHAS is a recognized charity in the annual Houston Marathon. In addition to our annual financial contribution to this agency, St. Philip made a contribution to the construction of a residential single-parent family home on the campus of St. John's Presbyterian Church in Houston.



www.popministry.org



Prayers of the people
are heard,
given time and space and meaning.

Prayers of the people
are carefully offered in
God's loving, healing presence.

Prayers of the people
are wrapped in empathic comfort and
spiritual resources are given
for the journey.

Originally called Presbyterian Outreach to Patients (POP) it was organized in 1974 by the Rev. Dr. Lawrence W. Johnson, Associate Pastor of Memorial Drive Presbyterian Church, to visit Presbyterians from “out of town.” Through the years the program has grown to include patients of all faiths, including those who are local. The name was recently changed to Prayers of the People.

Qualified hospital visitors are **VOLUNTEERS** who have a gift of compassionate listening, a heart for the sick, and a faith that shines in the darkest of nights.

POP is part of our Mission budget. St. Philip members have served on its board.



PRESBYTERIAN PAN AMERICAN SCHOOL

www.ppas.org

Mission Statement

Presbyterian Pan American School is a Christian college preparatory school that educates and empowers young adults for leadership in the global community. Our mission is to prepare these young adults for leadership.



Presbyterian Pan American School (PPAS) located south of Kingsville, TX, on land donated by the King Ranch family, has distinguished itself over the past century for its commitment to preparing international students along with racial and ethnic minorities for a university-level education. All classroom instruction is in English. The book, *Planting Trees, A History of Pan American School*, by the Rev. Dr. James S. Currie, is in the St. Philip library.

The four-year, fully accredited high school serves about 165 students from Mexico, Central America, Asia, Africa, and the United States. A program of excellent academics, spiritual development in the Reformed Presbyterian tradition, leadership training, volunteer service, athletics and a work program of six hours per week per student fill the days. Because 88% of students receive financial aid, there is a critical need for scholarship money. Tuition, room and board, and test fees have been \$15,000 for boarding students and \$8,500 for day students.

St. Philip members have served on its board and as President of its board. PPAS is part of St. Philip's Mission Budget.



PRESBYTERY OF NEW COVENANT

www.pbyofnewcovenant.org



Who We Are

Presbytery of New Covenant is made up of 106 local congregations, ten new church developments, spread across 23,000 square miles in southeast Texas, including Houston, It is located at 1110 Lovett Blvd., Houston, TX, 77006.

Our Vision

Growing congregations that passionately engage their community in making disciples.

The mission of the presbytery includes new church development, care for congregations in transition or crisis, supervision and nurture for those preparing for ordained ministry, leadership development events, and youth activities. The shared ministry of the presbytery is funded by gifts from the member churches. St. Philip is among the top five congregations in terms of presbytery support. Member churches connect with the work of Presbytery through their gifts of time, talent and treasure. Members of St. Philip have served and are serving on Presbytery committees.

Pictured are two members of St. Philip who went to Guatemala with our Presbytery and CEDEPCA. They took supplies donated by members of St. Philip. and health-care kits donated by Project C.U.R.E. Money was also donated for 53 water filters.





www.projectcure.org

Delivering HEALTH & HOPE to the world

Each year PROJECT C.U.R.E. delivers millions of dollars of donated medical relief into developing nations around the world. Since 1987, PROJECT C.U.R.E. has delivered equipment and supplies to incredibly needy people in more than 120 countries.

*“At the heart of Project C.U.R.E. are our **VOLUNTEERS**, on whom our organization depends. **Volunteers** represent numerous backgrounds, including nurses, doctors, students, young professionals and retirees, among others. From sorting donations of medical supplies and maintaining our inventory system to testing biomedical equipment and lending professional expertise to our various departments, **volunteers** provide invaluable support and are utilized according to their strengths and interests. Without the commitment of our **volunteers**, we could not deliver health and hope.”*

Several members of St. Philip **volunteer** at Project C.U.R.E.

Houston’s location: Sorting/Distribution Center
8251 Kempwood Drive, Houston, TX 77055
Phone: 832-251-2489



Packing truck to go to Mexico with medical supplies valued at \$800,000.





www.searchhomeless.org

Mission Statement

SEARCH Homeless Services pursues a mission of providing hope, creating opportunity, and transforming lives.

According to a SEARCH mailing, there are 7,356 homeless in Houston, Harris County and Ft. Bend County. Managing homelessness starts with obtaining the essentials of food & shelter. To end homelessness, people must build their confidence, ability and readiness to change. SEARCH facilitates the required behavior change that bolsters success.

SEARCH is included in the annual Mission budget.

HOUSE OF TINY TREASURES (HTT) part of SEARCH

This nationally accredited early childhood development center is dedicated to serving homeless children and families. Its mission is to provide comprehensive early care, education and therapeutic services to build stable, functional lives.

One of St. Philip's communion offerings goes to House of Tiny Treasures.

St. Philip **VOLUNTEERS, The Piecemakers**, lovingly create youth quilts for HTT.



They meet on the last Saturday of each month at 10 am, if you would like to be a part of this fun, creative group. They meet in the St. Philip Arts & Crafts Studio.

THEOLOGICAL EDUCATION FUND

www.presbyterianmission.org/ministries/seminaries/funds/

The Theological Education Fund (General) is the only dedicated source of denomination-wide funding for theological seminaries related to PC(USA). These monies subsidize the seminaries' operating budgets and enhance each school's ability to offer financial aid to students.

We have entrusted to PC(USA) 10 seminaries and 2 theological institutions related to the denomination by covenant agreement with the responsibility of educating and equipping persons of faith for pastoral leadership.

- [Austin Presbyterian Theological Seminary](#),
Austin, TX
- [Columbia Theological Seminary](#), Decatur, GA
- [University of Dubuque Theological Seminary](#),
Dubuque, IA
- [Louisville Presbyterian Theological Seminary](#),
Louisville, KY
- [McCormick Theological Seminary](#), Chicago, IL
- [Pittsburgh Theological Seminary](#), Pittsburgh, PA
- [Princeton Theological Seminary](#), Princeton, NJ
- [San Francisco Theological Seminary](#),
San Anselmo & Pasadena, CA
- [Johnson C. Smith Theological Seminary](#),
Atlanta, GA
- [Union Presbyterian Seminary](#),
Richmond, VA & Charlotte, NC

Seminaries Related to the PC(USA) by Covenant Agreement

- [Auburn Theological Seminary](#), New York, NY
- [Evangelical Seminary of Puerto Rico](#),
San Juan, Puerto Rico

UNITED CAMPUS MINISTRIES OF GREATER HOUSTON (UCMGH)

Mission Statement

The mission of UCMGH is to provide a place for spiritual growth that responds to student needs while drawing them closer to the Love of Christ.

UCMGH is a covenant partnership of the Presbytery of New Covenant, the Synod of the Sun of the Presbyterian Church (U.S.A.), the Houston Association of the United Church of Christ, the Coastal Plains Area of the Christian Church (Disciples of Christ), and the Christian Church (Disciples of Christ) in the Southwest.

UCMGH reaches out to those in the millennial generation who are searching for a deep-rooted faith. Authentic is the word many in this generation use.



The Rev. Lauren Suba is Executive Director of UCMGH and invites you to visit the UCMGH suite at the A.D. Bruce Religion Center on the UH campus. UCMGH is included in the annual St. Philip Mission Budget.



Mission Statement

The mission of The Women's Home is to help women in crisis regain their self-esteem and dignity, empowering them to return to society as productive, self-sufficient individuals.



WHEN LIVES ARE TATTERED
AND RELATIONSHIPS TORN,
WHEN SELF-ESTEEM IS SHREDDED
AND SELF-WORTH RIPPED AWAY,
WHEN WOMEN WANT DESPERATELY,
AND FIGHT DESPERATELY,
TO PIECE THEIR LIVES BACK TOGETHER.
WE ARE HERE.
WE ARE A REFUGE. WE ARE A RESOURCE.
WE ARE THE WOMEN'S HOME.



Personal hygiene items, jewelry, scarves, Kleenex, pens and note paper, stamps and other items are collected and put into 50 decorative photo boxes and delivered to The Women's Home each Good Friday by St. Philip **volunteers**.

The Women's Home is included in the annual St. Philip Mission Budget.



**Loading up gifts to take to
The Women's Home**

SPECIAL OFFERINGS



CHRISTMAS JOY OFFERING: SUPPORTING PAST, PRESENT, AND FUTURE LEADERS

For more than 70 years, Presbyterians have given generously at Christmas to support the unmet needs of families who have devoted their lives to the mission of the PC(USA). The Offering dates back to the 1930s, when the former Presbyterian Church in the United States began an offering to supplement inadequate retirement income and provide supplemental medical insurance for former ministers, missionaries, church workers, and their families.

Today this Offering is shared equally by the Assistance Program of the Board of Pensions, which provides critical assistance to Presbyterian church workers and their families, and Presbyterian-affiliated racial ethnic schools and colleges, which enable students to develop their gifts and find their calling.

St. Philip receives this offering during the Christmas season.



SPECIAL OFFERINGS



ONE GREAT HOUR OF SHARING: SHARING RESOURCES AND CHANGING LIVES

Since 1949 Presbyterians have joined with millions of other Christians through One Great Hour of Sharing to share God’s love with our neighbors-in-need around the world by providing relief to those affected by natural disasters, by providing food to the hungry, and by helping to empower the poor and oppressed by supporting the following:

Presbyterian Disaster Assistance—Receives 32% of undesignated gifts

Presbyterian Hunger Fund—Receives 36% of undesignated gifts

Self-Development of People—Receives 32% of undesignated gifts

St. Philip receives this offering during the Easter season.



SPECIAL OFFERINGS



PENTECOST OFFERING: INVESTING IN OUR GREATEST RESOURCE

Giving to the Pentecost Offering makes it possible for the church to encourage, develop, and support its young people, and address the needs of at-risk children. Forty percent of this offering can be retained by individual congregations wanting to make an impact in the lives of young people within their own community.

Your gifts to the Pentecost Offering help support:

[Young Adult Volunteers](#)

[Ministries for Youth](#)

[Children-at-Risk](#)

St. Philip receives this offering on Pentecost Sunday



SPECIAL OFFERINGS



PEACE & GLOBAL WITNESS OFFERING: BLESSED ARE THE PEACEMAKERS

What you've known as the Peacemaking Offering has been transformed into the Peace & Global Witness Offering. This new Offering will have a greater global reach, more significant impact, and bring peace to people through Christ.

A gift to the Peace & Global Witness Offering enables the church to promote the Peace of Christ by addressing systems of injustice across the world. Individual congregations are encouraged to utilize up to 25% of this Offering to sustain their local peacemaking ministries.

This offering is received on World Communion Sunday, the first Sunday in October.



The information in this booklet came from the individual partner's websites and helpful and appreciated input from the following:

**Al & Beth Atkinson
Caryn Bahruth
Guinn Blackwell-Eagleson
Carla Burns
Bill Camfield
James & Sandra Cooper
Jane Cooper
Don & Janet Davis
Emily Estill
Fort & Beth Flowers
Jeanie Flowers
David Fox
Sara Jean Jackson
Jo Helland**

**Dick & Sue Howard
Jane Larkin
Mary McGuire
Gene McKelvey
Karen Morris
Don Padgett
Doug & Jenilee Simmons
Mary Sinderson
Randy Steward
Dick & Ruth Weber
Julie Wells
Jeanette Wennenweser
Hope Wilmarth**



**“Serve the Lord with Gladness”
Psalm 100**

**Banner
Created by
Hope Wilmarth**

This banner was created to represent St. Philip’s mission partners, but initially in response to a request made by the Kids Against Hunger leadership at St. Philip.

St. Philip’s wall of stained glass windows is the artist’s inspiration. The glass reflects the warmth and beauty of the people who worship here.

The design of the glass moves with energy as do the people who embrace the community within its walls and extends its fellowship abroad.

A rendition of The Shout of Joy® image, created in jewelry of former minister, Sam Lanham, is the inspiration for the “people” image on the banner: those who serve in mission at St. Philip Presbyterian Church, as well as those who are served.



ST. PHILIP

PRESBYTERIAN CHURCH

4807 SAN FELIPE
HOUSTON, TX 77056

www.saintphilip.net

ph: 713.622.4807

email: welcome@saintphilip.net