

# PHILIP-EYE

**Rev. Dr. John W. Wurster**  
Pastor, Head of Staff

**Rev. Keatan King**  
Associate Pastor

**Rev. Omar Rouchon**  
Associate Pastor

**Dr. Justin Langham**  
Director of Music

**Dr. Matthew Dirst**  
Organist

**Diana Weiss**  
Art Director

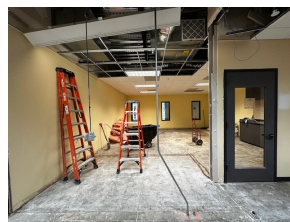
**Wilbert Parada**  
Facilities Supervisor

**Dimas Parada**  
Custodian

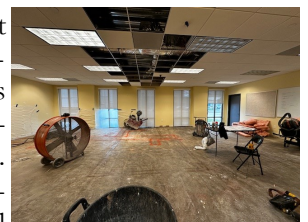
**Denise Ferrell**  
Bookkeeper

**Lorrie Castle**  
Office Manager  
Newsletter Editor

## THE SAINT PHILIP DAY SCHOOL IS TAKING SHAPE



You may have seen the “Do Not Enter” sign on the first-floor hallway of the Education Building as you enter it from the south entrance. The construction of the St. Philip Day School is now well underway. The flooring and drywall



has been removed, trenching has been dug in the thick concrete floor and most of the underground piping has been installed. Plumbing is the single biggest part of this project since we are installing two more bathrooms designed for small people as well as four more sinks. You can see in one photo the trenches, piping and mounds of dirt. You can also see in the other the rugged, vicious looking saw that carved through the concrete.



This is all the work of our construction contractor, Alpine Engineering and Construction Company. This company also outfitted the Sharpstown Baptist Church to accommodate Project One Day which uses the model that inspired our vision. The other key player in the design and construction of our school is English+Associates Architects, the firm that worked with us through site selection, conceptual design, detailed construction design, and securing the City of Houston construction permit.

Now they are providing construction oversight. Their expertise, competence and cooperation has been first class.



If Alpine is able to stay on schedule, they should complete their work during the week of April 20, which means we will again have the first floor of the Education Building available for normal Sunday activities. Our next step will be to obtain the Occupancy Permit from the City. The final and big step in having a facility ready for children is to obtain the license to operate our early childhood education center from the State of Texas. Once all of this is complete, St. Philip Day School will occupy about 2800 square feet of floor space and accommodate up to 35 children. Our schedule is tight, but our goal is to open our doors to our first class of young Houstonians around the beginning of August.

The other exciting aspect of the physical facility for our school is the playground shown in this photo. The weather has caused this project to stretch out longer than we had anticipated, but the beautiful weather of the last few days has been the gift from God we needed to achieve completion. Our vendor, All Play, and our project manager and St. Philip Day School team member Cindy Judson, have been capably

moving this project toward completion. You will be learning via separate communication of a celebration St. Philip will have immediately following the Sunday, March 9 worship service to commemorate and officially open the playground for the enjoyment of the youngest St. Philipians. Please plan to join us for that celebration.

We look forward to sharing with you other aspects of St. Philip's vision for addressing the important need lower income Houston families have for affordable early childhood care and education. We pray that God will bless us with a vibrant and growing capability for serving Houstonians in this critical area. We also look forward to finding all kinds of ways for members of St. Philip to be engaged in this mission.





## SAINT PHILIP DAY SCHOOL

# PLAYGROUND DEDICATION

SUNDAY, MARCH 9

following worship



Visit the St. Philip Day School  
Amazon Wishlist for the Playground

**Celebrate** with us as we dedicate the new playground through **prayer, scripture, & play** to the glory of God and with hope for the children and families whose lives will be touched by the St. Philip Day School!

Support the **St. Philip Day School** by purchasing a playground bike or toy.



## MOZART MINIATURES

MUSIC AT  ST. PHILIP

Wolfgang Amadeus Mozart's name is nearly synonymous with "classical" music. Whether that fame is due to his genius exhibited by his many broadly performed works or his depiction in the 1984 film "Amadeus," Mozart remains a fixture in concert programs and opera houses to this day, over 233 years after his death.

A devout Catholic throughout his life, some of Mozart's most beloved works either carry religious undertones or were specifically composed for particular occasions in the church calendar. While audiences for centuries have enjoyed his larger religious settings like Requiem in D minor, K. 626 or the Great Mass in C minor, K. 427, Mozart also wrote a treasure trove of smaller works, such as his many Missa Brevis settings and his 17 church sonatas, which would have been more commonly heard in weekly religious services.

Marking the beginning of Lent, the music ministry at St. Philip will be presenting a variety of Mozart's music throughout this Sunday's worship service. Alongside a small chamber ensemble — similar to the forces that would have been used in Mozart's time — the St. Philip choir will present the opening from Missa Brevis in D minor, K.65 and the Kyrie and Agnus Dei movements from the charming Missa Brevis in F major, K. 192. Bookending the service will be two of Mozart's church sonatas, which are short single-movement instrumental pieces originally composed for Mass services between the Epistle and Gospel readings. Although most were written for the standard "Salzburg Church Quartet" (two violins, organ, and basso continuo), some of these sonatas also include winds, brass, and timpani.

This month's musical moment comes from Mozart's Church Sonata in E-flat major, the first sonata in the series composed in 1772, and our opening voluntary this Sunday. Join us and hear this beautiful, rarely performed music live!

Justin Langham, D.M.A.  
Director of Music



ST. PHILIP VBS | LENT 2025



# THE LORD'S SUPPER



## VACATION BIBLE SCHOOL

ALL CHILDREN AGES 3 - 5<sup>TH</sup> GRADE ARE WELCOMED > **THERE IS NO COST**  
ST. PHILIP PRESBYTERIAN CHURCH - 4807 SAN FELIPE - EDUCATION BLDG.

& WEAR CLOSED-TOE SHOES   
\* PLEASE BRING A BAGGED LUNCH 

SATURDAY  
**MARCH 22**  
9 AM - 2 PM  
MORE INFO | REGISTER: [SAINTPHILIP.NET](http://SAINTPHILIP.NET)

## WHAT IS THE PEACEMAKING AND SOCIAL JUSTICE COMMITTEE ALL ABOUT?

St. Philip's Peacemaking and Social Justice (PSJ) committee strives to dismantle what we think we know about current social justice issues and concerns. The ministries within the PSJ committee seek to address identified issues at the systemic level. Our current state of disruption makes it challenging for individuals and groups to engage in actions to address the many forms of injustice. Through study, hands-on support, and special offerings, PSJ offers ways to take action.

- 🌱 The *Social Justice Study Group* offers an opportunity to address the need for and interest in discussion opportunities for current events in light of our faith and the teachings of our church. Recent books have addressed racism, Christian nationalism, and disinformation. The group meets the first Monday of each month by Zoom. Contact: Sara Jean Jackson ([sjj10223@gmail.com](mailto:sjj10223@gmail.com)).
- 🌱 *Equal Exchange* (EE) provides opportunities throughout the year for St. Philipians and friends to purchase fairly traded, organically produced Equal Exchange products (coffee, tea, olive oil, chocolate, and more) for themselves or others. Purchase opportunities typically occur around the "chocolate holidays" of Valentine's Day, Easter, and Halloween, with seasonally bagged Mini chocolates, available at each. And look for the EE tables at the annual church-wide Alternative Market too. Watch the Sunday bulletins, weekly email updates, and the media screens at church for other pop-up opportunities. Contact: Kate Burkart ([kiburkart@comcast.net](mailto:kiburkart@comcast.net)).
- 🌱 The *St. Philip Community Garden* lives out the call to care for creation and for our neighbors. Thanks to a small grant from the Central Mission Endowment Fund, we were able to replenish the soil in the two garden beds in 2024, which had not been fully amended for nearly ten years. In total for 2024 we harvested and delivered approximately 480 pounds of produce to the Christian Community Service Center (CCSC) Emergency Services food pantry. Contact: Cathy Patterson : ([cpatters@swbell.net](mailto:cpatters@swbell.net)).
- 🌱 *Earth Care Congregation* actions at St. Philip will continue to be involved in making our buildings and operations, worship services, education, and outreach respectful of the glory of God's creation. The Earth Care Team sup-

ports recycling and composting efforts on campus. They also promote purchasing green electricity, producing solar electricity, and encouraging automated energy management on the St Philip campus. The group hosts an Earth Day celebration every April. Contact: Judith Hiott : ([beetlehiott@gmail.com](mailto:beetlehiott@gmail.com)).

- 🌱 *Refugee Support* is an ongoing effort to help families fleeing dangerous conditions in their home countries who relocate in Houston to smooth the transition to a new culture and new systems. St. Philip members work with established refugee support organizations like Interfaith Ministries of Greater Houston to help families navigate the local education systems, find safe and affordable housing, and search for employment opportunities. This past fall, our family from Afghanistan enjoyed a St. Philip-hosted baby shower in preparation for the birth of their third son! Contact: Tina Bryan ([tinairene@sbcglobal.net](mailto:tinairene@sbcglobal.net)).
- 🌱 The *Negro Spiritual Royalties Project* honors the Black composers of traditional Negro Spiritual music who are often unknown to history and therefore unable to receive royalties directed to their estates for the use of their songs. To remedy this inequity, a fund was created and approved by the Session where we collect voluntary "royalties" when we use this music. This small gesture of reparation seeks to help heal the long history of injury to Black persons. Community Music Center of Houston ([cmchouston.org](http://cmchouston.org)) is the recipient of offerings made to the St Philip's Negro Spiritual Royalties Project for the past three years.
- 🌱 *Houston ISD State takeover and November 2024 Bond Issues* were addressed this past fall by PSJ. The committee responded to the immediate need for information on the current public education concerns and hosted an information meeting regarding the state takeover of Houston Independent School District and the bond issues on the November 2024 ballot. Knowledgeable speakers were invited to address the issues and answer participants questions. Contact: Denise Wilborn : ([dwilborn55@gmail.com](mailto:dwilborn55@gmail.com)).

The Peacemaking and Social Justice committee meets the first Sunday of each month in room 205 after worship. You are invited and welcome to join us to learn more about what the committee does to offer action opportunities and to share your ideas. Contact Denise Wilborn committee chair, at ([dwilborn55@gmail.com](mailto:dwilborn55@gmail.com)), if you have questions.

## PEACEMAKING AND SOCIAL JUSTICE FIFTH SUNDAYS

*Save the Date*

**Ways to Support Our Immigrant Neighbors**

*Sunday, March 30*

*Immediately following worship Light Bites  
Watch the St Philip Sunday bulletins and  
weekly email updates for additional details  
Denise Wilborn [dwilborn55@gmail.com](mailto:dwilborn55@gmail.com)*

## LOOKING FOR WAYS TO HELP IMMIGRANTS?

Help people "know their rights" by giving them a "Red Card," available from the [Immigrant Legal Resource Center](http://Immigrant Legal Resource Center). All people in the United States, regardless of immigration status, have certain rights and protections under the U.S. Constitution. Red Cards help people assert their rights and defend themselves in many situations, such as when ICE agents go to a home. These are available in multiple languages. One side of the card is printed in the language of the resident, and the other side is printed in English to be presented to the immigration official.



### 2025 LENT AT ST. PHILIP

The season of Lent begins with **Ash Wednesday** on **March 5**. We will have worship that day at 12 noon and 6:30 pm. Lunch will be available in the Gathering Area after the noon service. For the next five Wednesdays, **March 12-April 9**, we will continue our practice of midweek noon worship with guest preachers leading us. The services will be followed by lunch for those who can stay.

Our worship service for **the first Sunday in Lent, March 9**, will include music by Mozart and feature a chamber ensemble.

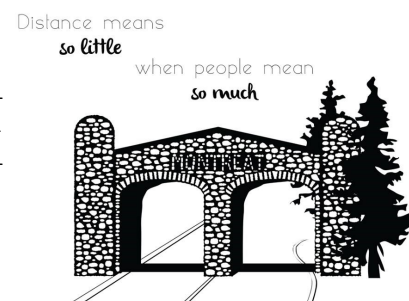
Again this Lent, John Wurster will offer **daily e-votions**. These brief biblical reflections are sent by e-mail each morning. To join the e-votions list, send a note to [john@sainthphilip.net](mailto:john@sainthphilip.net). Those subscribed for last year continue on the list for 2025.

**Lenten Lectio Divina Prayer Group**—The ancient desert mystics believed that scripture was like a love letter written to us by God, and the meditative scriptural reflection known as *Lectio Divina* ("divine reading") assumes that God speaks to us intimately, God is already praying in us, and we'll experience a profound encounter with the heart of God, rather than an intellectual study of scripture. Keatan is guiding a group through the four cycles of Lectio (read, reflect, respond, rest) every Monday morning at 9:00-9:20 a.m. for the season of Lent. To receive the Zoom link sent early Monday mornings, email Keatan at: [keatan@saintphilip.net](mailto:keatan@saintphilip.net).

Dear St. Philip,

I just received word that St. Philip has sent Montreat an additional gift of \$2,005.00 that had been collected during worship on communion Sunday – this gift evidently in addition to the very generous grants we have already received.

We have experienced an unprecedented outpouring of support over the past four months, but even amid the company of so many blessings, the congregation of St. Philip stands out. Your generosity means everything to us, providing crucial resources for recovery, enabling us to rebuild and resume God's mission of hospitality, fellowship, and transformation in Montreat. Our recovery is navigating a long path, ultimately to include insurance proceeds, philanthropy, and the necessary adjustments to cover the costs of repairs, the restoration of our campus, and losses sustained while we were closed. Whether you know it or not, this support comes accompanied by hope and strength, reminding us of our part in a caring Presbyterian community.



Please pass along our deep gratitude to your congregation for standing with us during this challenging time. As I write this, I believe my wife is winging her way toward Houston to help lead a retreat there this weekend. I'm so sorry I couldn't join her to thank you personally!

Sincerely,

*Richard DuBose*

President

Montreat Conference Center

Montreat.org | Phone: 828.419.9800

Kids Against Hunger®

PACKING SESSIONS



THE NEXT PACKING SESSION IS:  
**SUNDAY, MARCH 23**  
9:30 - 10:30 AM, IN THE DINING ROOM

**SPOTS ARE LIMITED!**  
EMAIL [KEATAN@SAINTPHILIP.NET](mailto:KEATAN@SAINTPHILIP.NET)  
IF YOU WOULD LIKE TO PARTICIPATE.

UPCOMING PACKING SESSIONS:  
SUNDAY, APRIL 13 AT 9:30-10:30 AM

## HOSTS NEEDED! - SOMERVILLE COLLEGE CHOIR

Music at St. Philip is excited to host the Somerville College Choir from Oxford, England as our choir-in-residence the weekend of **March 22-24**, when they will be performing a concert on Sunday, **March 23** at 3 PM, and will act as our guest choir for the 11 AM worship service that morning. We are thrilled to host this wonderful ensemble, directed by William Dawes, on the first stop of their U.S. tour where they will also sing in Tyler, TX followed by several venues in New York City.

To offset the choir's cost, we are in need of hosts for about 15-20 of these student musicians while they are in town. Responsibilities would include hosting them for two nights (Saturday, **March 22** and Sunday, **March 23**) and transportation to and from St. Philip each day. They will also need a ride to St. Philip once more on Monday, **March 24** morning to catch their bus, which departs at 9 AM.

If you are willing to help out, know someone who is, or have any questions whatsoever, please reach out to Justin ([justin@saintphilip.net](mailto:justin@saintphilip.net)) at your earliest convenience!"



May 29—June 1

Registration details available soon.

## SANCTUARY FLOWERS FOR 2025

Celebrate your wedding anniversary, family birthdays, or memorialize your mother and father by sponsoring the chancel flowers on Sunday morning. Please sign up to sponsor the flowers on the date which you prefer by contacting Lorrie Castle at 713-622-4807 or [lorrie@saintphilip.net](mailto:lorrie@saintphilip.net) or you may go to [saintphilip.net](http://saintphilip.net) the calendar page and click on the chancel flower picture. Sandra Truxillo, Flower Coordinator, will call you the week you chose to sponsor flowers to discuss the type of flowers and the message you would like in the bulletin. The standard arrangement for chancel flowers is \$130, special requests or exotic flowers may cost more.

## ST. PHILIP DURING THE WEEK

**SOCIAL JUSTICE STUDY GROUP**—This group meets on first Monday nights, 7-8 p.m., by zoom to read and discuss social justice issues of our day. Interested persons who want to be added to our zoom mailing list can contact Sara Jean Jackson ([sjj10223@gmail.com](mailto:sjj10223@gmail.com)).

**LAMBETH STUDY**—Keatan King leads young adults in study every Monday evening at 7:00 PM via Zoom. It is a time of study, reflection, and prayer. If you would like more details, email Keatan at: [keatan@saintphilip.net](mailto:keatan@saintphilip.net).

**MIDWEEK BIBLE STUDY**— Wednesday Bible study with John Wurster meets weekly at 9:30 AM, and is a hybrid format with an in-person option in the Office Conference Room and also a Zoom option. Bible novices, Bible experts, and everyone in between is welcome! To get on the list for the Zoom links, send a note to:

[john@saintphilip.net](mailto:john@saintphilip.net).

**WOMEN'S MONTHLY BOOK CLUB**—This self-led, interactive group produces lively discussions and wonderful fellowship. The next meeting is **March 13** at 7:00 PM. We will discuss *This Familiar Heart: An Improbable Love Story* by Babette Fraser Hale. If you have any questions or concerns, please contact Nina Lambright at: [nnl@lambrightlaw.com](mailto:nnl@lambrightlaw.com).

**PRESBYTERIAN MEN'S WEEKLY FELLOWSHIP**— Men of all ages are welcome to participate in this self-led group. The Men's Weekly Fellowship meets each Friday in person in the office Conference Room and via Zoom at 11:45 AM. We are learning from *Too Busy Not to Pray* by Bill Hybels. If you would like to join them please contact Gary Gardner at: [ggardne148@aol.com](mailto:ggardne148@aol.com).

### NURSERY CARE IS AVAILABLE THROUGHOUT SUNDAY MORNINGS

8:30 a.m.—12:30 p.m. Infants to age 4 are invited to our Nursery which is staffed by professional childcare providers. Please find that our Nursery has temporarily been moved to Room 100 off the Gathering Area. An usher or a greeter will be happy to direct you there.

## SUNDAY SCHOOL CLASSES FOR ALL AGES

**SUNDAY SCHOOL CLASSES START  
AT 9:45 A.M. UNLESS OTHERWISE NOTED**

**GODLY PLAY**—Ages 3—Kindergarten—ROOM 103

**ELEMENTARY**—Grades 1-4—Room 205—Beginning **February 9**, the elementary-aged children are invited to participate in *Mini-Revolutions*, a lectionary-based curriculum employing multiple modes of learning engagement, and centered on activities and practices to help build spiritual habits. Room 205.

**YOUTH**—Grades 5-12—Dining Room—Kids Against Hunger Youth families will turn the Sunday School hour into a time to revive the Kids Against Hunger program as

leaders in our congregation.

**ADULT BIBLE STUDY**—ROOM 204—We are studying Proverbs in Dr. Robert Alter's *The Wisdom Books: Job, Proverbs and Ecclesiastes* (2010). Join us from 9:30 to 10:40 AM to deepen our understanding of God's faithfulness to God's people from Dr. Alter's translation and commentary on the Biblical Hebrew. All are welcome.

**CHILDREN'S CHAPEL**—In the Children's Chapel, our young disciples learn the whos, whats, wheres, whens and whys of worship in the chapel, while also praying, seeing and hearing God's word at an age-appropriate level. Children return to join the congregation in the first few pews on the lectern side of the church for the last hymn. The Children's Chapel is held every 2nd and 4th Sunday when we have Sunday School classes. Children are able to participate in this during the worship service.

**CHURCH & SOCIETY**—ROOM 201—Join us from 9:30 AM—10:40 AM with presentations in person and by Zoom. **March 9** - St. Philip Mission Partner—Plant It Forward - Eat local. Support refugees. Plant it Forward is a Houston, Texas-based nonprofit organization with the mission to empower refugees to develop sustainable farming businesses that produce fresh, healthy food for our community. PIF envisions thriving farmers, enriching Houston's vibrant culture. Presented by Nijhor Ragnan, CEO of Plant it Forward. **March 16** - Dawn Mountain Center for Tibetan Buddhist Temple, Community Center and Research Institute—resident in the Mission Center of St. Philip. The mission of Dawn Mountain is to further the spiritual growth of our diverse community as a living bridge between traditional Tibetan Buddhist teachings and curious people everywhere. Dawn Mountain provides a transformative path of practice, study and personal growth. Presenter by Anne Carolyn Klein/Lama Rigzin Drolma and Harvey Aronson (Lama Namgyal Dorje). **March 23** - St. Philip Mission Partner—Christian Community Service Center Helping Houston Families Move Forward The mission of CCSC is to serve the poor, hungry, disabled and otherwise needy while respecting their religious, ethnic or cultural differences. CCSC services include food pantry and clothing, utility bill and rental assistance, workforce development, and youth services. Presented by Michelle Shonbeck - President & CEO of Christian Community Service Center. **March 30** - St. Philip Mission Partner—Kids Against Hunger provides fully nutritious food to impoverished children and families around the world and around the corner. St. Philip serves as a locally-based network food packaging satellite facility where volunteers from community groups can pack thousands of highly nutritious, vitamin-fortified cinnamon apple oatmeal packages with servings for four people. St. Philip students 5th grade through 12th will describe how they organize packing schedules and maintain the packing facilities so that volunteers can be a part of Kids Against Hunger's goal - the eradication of world hunger. If you would like to join any of the classes, send an email to [jshartman01@gmail.com](mailto:jshartman01@gmail.com)

# 2025 Presbyterian Women Spring Gathering



## CULTIVATING A WELL BALANCED LIFE

SATURDAY, APRIL 5<sup>TH</sup> | 9:30 A.M.—2:30 P.M.

St. Philip Presbyterian Church

4807 San Felipe St., Houston, TX

### Speakers:

**Mahlon Hight**, Preston Hollow Presbyterian Church, Dallas, TX

**Meg Scott-Johnson**, St. Philip Presbyterian Church, Houston, TX

### Worship Leader:

**Rev. Keatan King**, St. Philip Presbyterian Church, Houston, TX

Registration Fee: \$18

First Time Attendee: \$15

Late/Walk In: \$20

*Includes Continental Breakfast and Lunch*

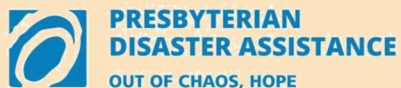


### Mission Opportunity

UCM is an ecumenical partnership of the Presbyterian Church USA, the Christian Church (Disciples of Christ), and the United Church of Christ.

“The mission is to demonstrate the love of God as expressed through Jesus Christ through programs initiated within the local college and university communities which equip, inform and serve.”

**Registration Deadline: Monday, March 31<sup>st</sup>**





## Presbytery of New Covenant Presbyterian Women

### 2025 Spring Gathering

St. Philip Presbyterian Church  
4807 San Felipe St., Houston, Texas

**Saturday, April 5, 2025**

9:30 a.m. – 10:00 a.m.	Registration and continental breakfast
10:00 a.m. – 10:35 a.m.	Welcome & Presbytery PW Business Meeting
10:40 a.m. – 11:30 a.m.	Mahlon Hight, Cultivating a Well Balance Life
	Break
11:40 a.m. – 12:30 p.m.	Meg Scott-Johnson, RE - Personal and congregational disaster planning basics and helpful hints.
12:30 p.m. – 1:30 p.m.	Lunch and Fellowship
1:30 p.m. – 2:30 p.m.	Worship Service Led by Rev. Keatan King, Communion

**Registration Deadline: Monday, March 31<sup>st</sup>**

**Make your check payable to: PW – Presbytery of New Covenant**

----- *Print, then detach registration form and mail with your check* -----

Send your registration form and payment to: <b>Cynthia Rogan, Treasure</b> 2410 Colby Bend Drive Katy, Texas 77450 cynthia.rogan@hotmail.com / (281) 630-1136		<b>Registration Fee: \$18</b> <b>First – Time Attendee: \$15</b> <b>Late/Walk In: \$20</b>	
<b>Name</b>			
<b>Address</b>			
<b>City</b>		<b>Zip Code</b>	
<b>Phone #</b>		<b>E-Mail</b>	
<b>Church</b>		<b>City</b>	
<b>Emergency Contact Name</b>		<b>Phone #</b>	
<b>Will you Attend Breakfast?</b> Yes____ No____		<b>Will you attend lunch?</b> Yes____ No____	
<b>Special Dietary Needs:</b>			

Please send questions or concerns to Mary Ann Thomas, Co-Moderator  
ma.thomas48@yahoo.com / (713) 594-1872

## OUR BROTHER IS HERE AND IS JUST SO ADORABLE!!

*We are so excited to announce the birth of our little brother Hashmatullah (nickname Roman) the evening of Saturday February 15. He weighed in at 6 lbs. 10 oz. and Mommy and little Roman are doing well.*

*Roman is dressed in the cutests outfits gifted from the baby shower. And mommy and daddy were able to purchase a bassinet and stroller from the funds so generously given. Thank you so, so much for helping us.*

*We really love our little brother. He is the first of our family to be born in this country. May God bless us all.*



## NEW ADDITION TO MUSIC AT ST. PHILIP

The music department is excited to add a pair of Adams Universal Revolution timpani drums with a smooth copper finish. They will be played for the first time during worship on Sunday, **March 9** when the St. Philip choir presents music from Mozart's Missa Brevis in F Major, K.192 with a small chamber ensemble.



## PRESBYTERIAN WOMEN

All women of the church are invited to join any of the meetings of Presbyterian Women.

### **Thursday Evening Circle—March 6**

meets 1st Thursday of each month at 7 PM in the Dining Room.

Sarah Victorian [sarah.m.0617@gmail.com](mailto:sarah.m.0617@gmail.com)

### **Monday Morning Saints—March 10**

meets 2nd Monday of each month at 10 AM in the Dining Room -

Tricia Tolbert [phtolbert@gmail.com](mailto:phtolbert@gmail.com)

### **The Hallmark Circle**

meets each month - contact Sue Shirley-Howard for location, day and time

[sue@fluencyhouston.com](mailto:sue@fluencyhouston.com)

### **Sunday Circle—March 16**

meets 3rd Sunday of each month after worship in the Dining Room.

Jan Meyer [jsmeyer9990@gmail.com](mailto:jsmeyer9990@gmail.com)

### **One More Chance Study for Everyone—March 30**

Meets 4th Sunday of each month at 10 a.m. in the Library. We'll be talking about

Lesson 8 from "Let Justice Roll Down". Everyone is welcome.

Lee Ardell [leardell@gmail.com](mailto:leardell@gmail.com)

April Birthdays		
Sylvia	Lawson	1
Harold	Dement	3
Elizabeth	Bratton	3
Russell	Bahruth	4
Judy	Barrish	4
Sprague	Boone	4
Janet	Macheledt	5
Caitlin	Lewis	5
Arlo	Weltge	6
Gary	Whitney	8
Steve	Carmichael	9
Gage	Grewal	9
Ryan	Maguire	10
Jan	Ostendorf	11
Stephen	Paine	11
Ben	Dees	11
Rhonda	Sands	13
Caroline	Vestal	13
Lucy	Vestal	13
Bob	Burns	14
Pam	Taylor	15
Bob	Skaggs	17
Mary	Murphy	18
Christina	Jasani	18
Ethan	Lambright	18
Dick	Nunn	19
Douglas	Duerr	19
Lincoln	Vahora	19
Gregory	Han	21
Penny	Larkin	22
Richard	Johnson	22
Nidhal	Aldarraji	22
Kay	Cash	23
Jane	Ikpeme	23
Betsy	Boston	24
Patrick	Conner	24
Michelle	Goodman	24
Mary	Sinderson	25
Jim	Larkin	25
David	Winship	26
Gabriel	Han	27
John	Judson	28
Lee	Ardell	29
Vada	Woodall	30

## THE WOMEN'S HOME EASTER BOXES

Support the St. Philip 2025 Easter mission project by donating items to fill Easter boxes benefiting The Women's Home residents. The Women's Home builds communities that strengthen women and supports families as they reclaim their stability. The Women's Home operates two affordable housing communities and a collaborative community service center that help families thrive. The service center offers primary and behavioral health care, youth development services, adult education, workforce development training, basic needs assistance, and other wrap-around support services.



There are three ways you can help: you can donate items, make a contribution, or assemble boxes. Read on for details about each opportunity.

1. **Donate:** Drop off your donated items in the Gathering Area or Church Office collection boxes through **April 6**. You can drop off any amount you wish to give of any item on the supplies list. Please no used items, only new unopened donations. Please no jumbo size bottles, preferably travel sizes 2 oz. to 4 oz. and regular size toiletries 11 oz. to 14 oz.

Shampoo	Nail Files	Reading Glasses	Umbrellas
Conditioner	Nail Polish	Costume Jewelry	Mini Writing Tablets
Body Wash	Hair Ties/Elastics	Scarves	Pens/Pencils
Toothbrush	Razors	Small make-up samples	Individual Miniature pack- ages of Easter candies
Tooth Paste	Lotion	Playing Cards	Packets of Herbal Tea
Dental Floss	Lip Balm	Journals	(Caffeine Free)
Deodorant	Tissue Packs	Day Planners/Calendars	
Mouthwash	Socks	Note Cards	

2. You may also make a monetary donation and the Mission Committee will purchase the items still needed at the end of the collection period to fill the boxes. **Please make donation by April 6.** To make a contribution via check write Women's Home on the memo line, drop in the offering plate or mail to the church office. Or online by choosing Designated Funds and in the memo put Women's Home.
3. **Assemble:** You are invited to assemble our goal of 60 boxes on Saturday, **April 12** at 10 a.m. in the church mission room. This is a fun service project for all ages and an opportunity for the St. Philip community to come together in service during the Easter holiday! Please RSVP by email to [keatan@saintphilip.net](mailto:keatan@saintphilip.net) because spots are limited.



Saturday, March 1  
St. Philipians gathered at the  
Community Garden  
to prepare the soil and plant  
the spring crop. The produce  
will be donated to CCSC  
Emergency Food Pantry when  
it is ready.



## IN OUR PRAYERS

*Charlotte Kibler and the Boone Family upon the death of Dewey Kibler, husband, father, and grandfather. A memorial service will be held at First Presbyterian Church of Houston on Friday, March 7 at 11:00 a.m.*

*St. Philippians and their families*—Jo Helland; Peg Palisin; Vada Woodall; Russell Bahruth; Jeremy Mattern; Scott Easterly; Bill Holden; Roderick James; David Winship; Bob Ardell; Richard Johnson; Philip McDaniel; Charlotte Kibler; Carolyn Vestal; Diane Clarke; Susan Huffman; Emily Estill; Barbara Cavanaugh; Mary Herlitz; Jan Ostendorf; Dick Nunn; Ben Dees; Joe Harwood; Kathryn Harwood; Nancy E. Johnson; Eleanor Grant; Judy Nunn; Molly Boren-Whitney; Don Padgett; Steve Adger; Judith Crane; Arlette Keene; Mezgebe Gebray; Jacqui – cousin of Angelina Fonseca-Grewal; John & Raquel Calhoun – brother and sister-in-law of Pam Keever; Terese Murphy- cousin of Gary Gardner and Peg Palisin; Guinn Blackwell-Eagleson and partner John Bonica; Vera Moore – mother of Chuck Johnson; Ann Perenyi – mother of Lad Perenyi; and Ann Perkins Cloud—cousin of Stephen Paine.

*Homebound*—Elizabeth Arp; Beverly Baker; John Bobbitt; Joan Boelens; Edith Patterson; Joyce Randolph; George and Lorraine Scott; Mary Sinderson; and Sondra Sullivan.

*Friends of St. Philippians*—Erin McDougal, Jacqueline Hazrum, Matias Hazrum—friends of Kate Burkart; Brenda Paulk – friend of Bonnie Moore; Ann Eustler & Janet Rowlands – friends of Mary Mcguire; Audrey Eubank Harris, Pete & Gloria Benevides, Jay Stokes & Anna Domonte, friends of Curt & Sharon Webb; Marianne Hash – friend of Jane Cooper; Mary Watters and Mindy Cooper-Smith – friends of Bill and Jacqueline Hamilton Taylor; Claude Bowden – friend of Peg Palisin and Gary Gardner; Kenneth and Donna Benton – friends of William Rowe; Tom Barnett - friend of Robin and Gary Willis; Jackie Janacek, Bill Ward, Joyce Freudenberg and Annie & Sidney Roach– friends of Stephen Paine; Betsy Shear Lewis – friend of Laney Miller; and Shirley Stubblefield—friend of Barbara Runge.

If you have a pastoral care need or a prayer request you would like to share, please email: [deacons@saintphilip.net](mailto:deacons@saintphilip.net)

**Prayer List is a powerful tool for bringing comfort, healing, and peace to those in need. So, let's keep it up to date and continue to lift up our brothers and sisters in prayer.**

## CONTRIBUTIONS

Pledge payments, communion gifts and other gifts to support the Church can be made anytime through our website (<http://saintphilip.net/>), text “SPPC” to 73256 and follow the prompts, or sent to the Church Office at 4807 San Felipe, Houston, TX 77056.

The next edition of the Philip-Eye will be available:  
**Tuesday, April 1—Deadline March 27—3:00 p.m.**  
 Stay connected with regular emails from the pastors until then.

If you have any comments or suggestions for the Philip-Eye, please send them to:  
[philipeye@saintphilip.net](mailto:philipeye@saintphilip.net) or call 713-622-4807 and ask for Lorrie.



MATTHEW 25



MORE LIGHT  
PRESBYTERIANS



Instagram



4807 San Felipe, Houston, TX 77056

Phone: 713.622.4807 Fax: 713.622.5405 [www.saintphilip.net](http://www.saintphilip.net)